







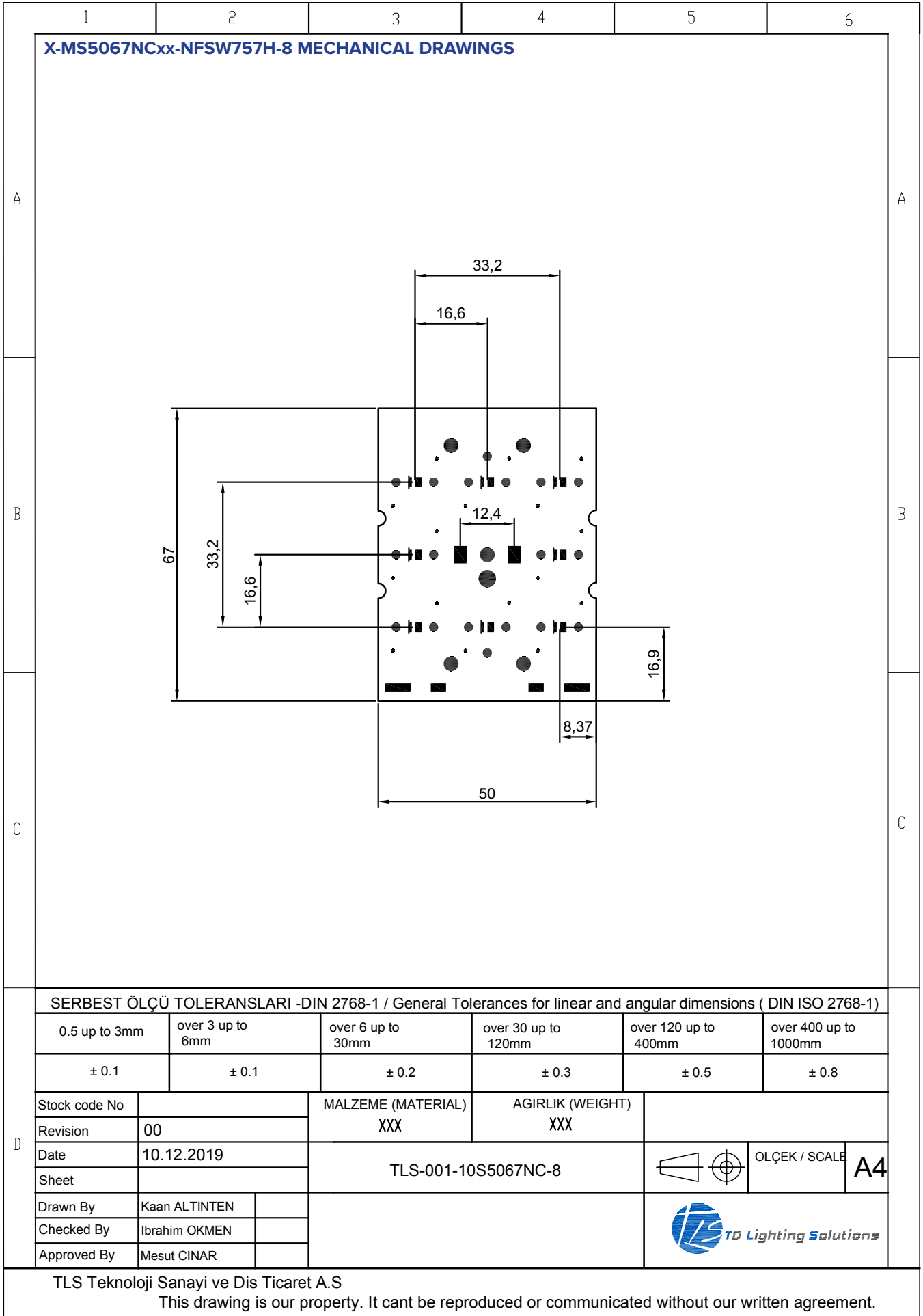
## DRIVING CURRENT VS LUMEN OUTPUT SPECIFICATION

Common Characteristic [@Tj : 85°C] ;			
Module Code	X-MS5067NCxx-NFSW757H-8		
PCB Material	ALU	Electrical Connection	
Operating Temperature (°C)	-40 ~ +85	Parallel	2
Storage Temperature (°C)	-40 ~ +55	Series	4
Thermal Conductivity (W/m-K)	1>	LED Quantity	8
<b>LED NFSW757H_R8000</b>			
Correlated Color Temperature (CCT)	4000K		
Color Rendering Index (CRI)	80+		
Module Operating Voltage (V)	10,80	11,20	11,60
Module Operating Current (mA)	150	250	350
Branch Operating Current (mA)	75	125	175
Module Power (W)	1,62	2,80	4,06
Module Light Output (lm)	285	454	625
Module Efficiency (lm/W)	176	162	154
<b>LED NF2W757H-F1_R8000</b>			
Correlated Color Temperature (CCT)	4000K		
Color Rendering Index (CRI)	80+		
Module Operating Voltage (V)	10,80	11,28	11,60
Module Operating Current (mA)	150	250	350
Branch Operating Current (mA)	75	125	175
Module Power (W)	1,62	2,82	4,06
Module Light Output (lm)	308	508	690
Module Efficiency (lm/W)	190	180	170

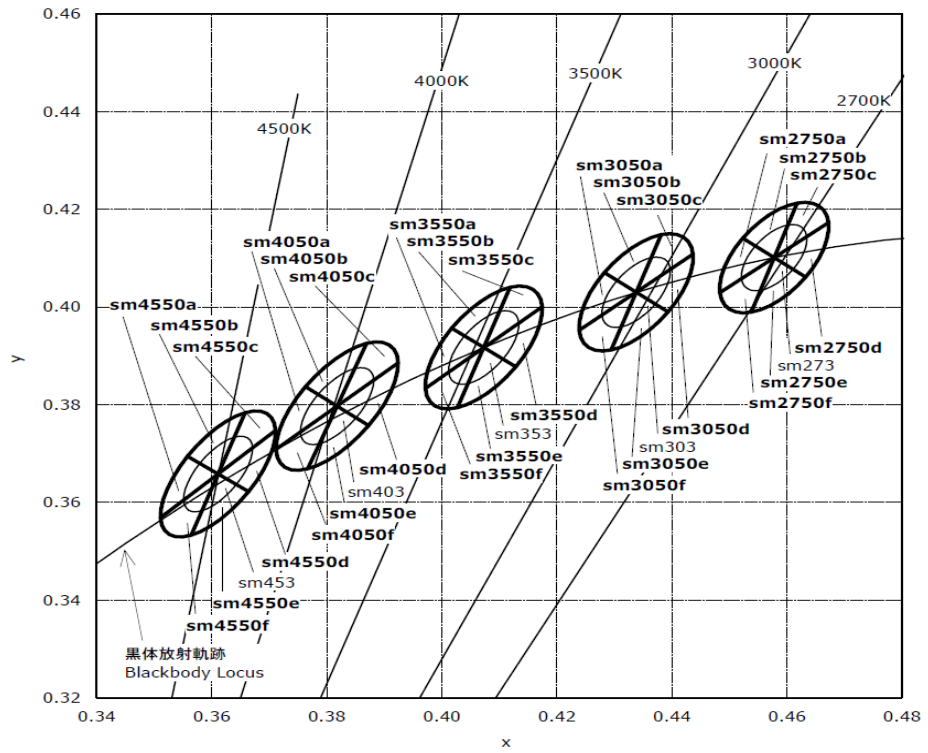
The table below shows how to Module Light Output changes depending on CCT (°K)

LED	Lumen Output Multiplier				
	2700°K (CRI 80)	3000°K (CRI 80)	4000°K (CRI 80)	5000°K (CRI 80)	6500°K (CRI 80)
NFSW757H_R8000	0,875	0,916	1	1	1
NF2W757H-F1_R8000	0,82	0,98	1,1	1,1	1,1

Relative luminous intensity versus CCT (°K)



## CCT AND BINNING INFORMATION



## LEGAL NOTICE

Product information provided by TLS Teknoloji Sistemleri San ve Dış Tic AŞ ("TLS") in this document is believed to be correct and accurate. TLS reserves the right to change/correct the specifications and other data or information relating to products without notice but TLS accepts no liability for errors that may appear in this document, howsoever occurring, or liability arising from the use or application of any information or data provided herein. Neither the supply of such information, nor the purchase or use of products conveys any licence or permission under patent, copyright, trademark or other intellectual property right of TLS or third parties.

Products sold by TLS are subject to its standard Terms and Conditions of Sale that are available on request. No warranty is given that products do not infringe the intellectual property rights of third parties, and furthermore, the use of products in certain ways or in combination with TLS, or non-TLS furnished equipments/components may infringe intellectual property rights of TLS.

The purpose of this document is to provide information only and it may not be used, applied or reproduced (in whole or in part) for any purpose nor be taken as a representation relating to the products in question. No warranty or guarantee express or implied is made concerning the capability, performance or suitability of any product, and information concerning possible applications or methods of use is provided for guidance only and not as a recommendation. The user is solely responsible for determining the performance and suitability of the product in any application and checking that any specification or data it seeks to rely on has not been superseded.

Products are intended for normal commercial applications. For applications requiring unusual environmental requirements, extended temperature range, or high reliability capability (e.g. military, or medical applications), special processing/testing/conditions of sale may be available on application to TLS.

## CONTACT

### **TLS Teknoloji Sistemleri San ve Dış Tic AŞ**

Akçaburgaz Mahallesi 3080. Sokak No:5 Esenyurt / İstanbul / TURKEY

info@tsteknoloji.com  
+90 444 27 33