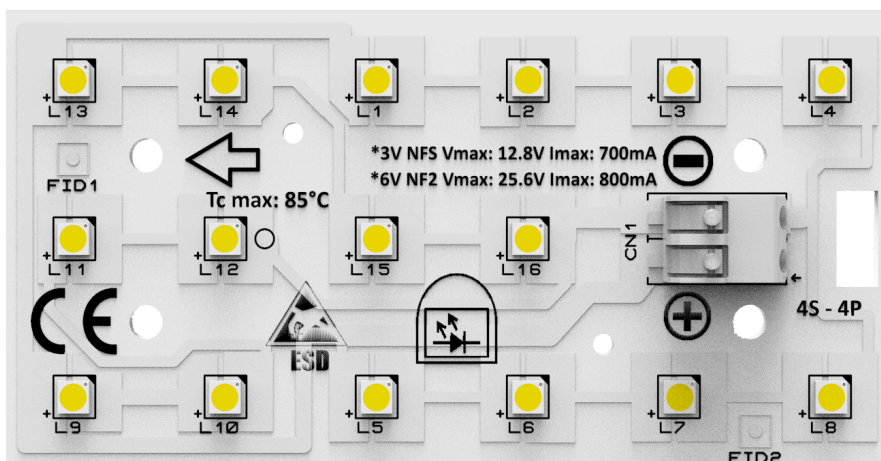


PRODUCT PHOTO



SPECIFICATIONS

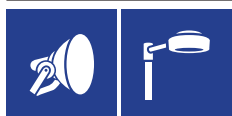
- Default driving method is constant current input
- CCT Range from 2000°K up to 6500°K
- Luminous flux range from 1213 lm to 2611 lm
- Efficacy of the module up to 170 lm/W
- CRI 80 is standart, CRI 70 and CRI 90 are available
- Outstanding system color tolerance MacAdam 3 over the full operating area
- Simple installation (e.g. screw)
- Long life-time > 60,000 hours
- 5 years guarantee at specified conditions



For your orders please call us:

+90 444 27 33

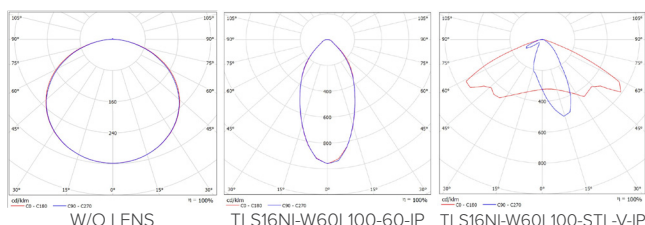
APPLICATIONS



Flood Lighting

Street Lighting

PHOTOMETRY



W/O LENS

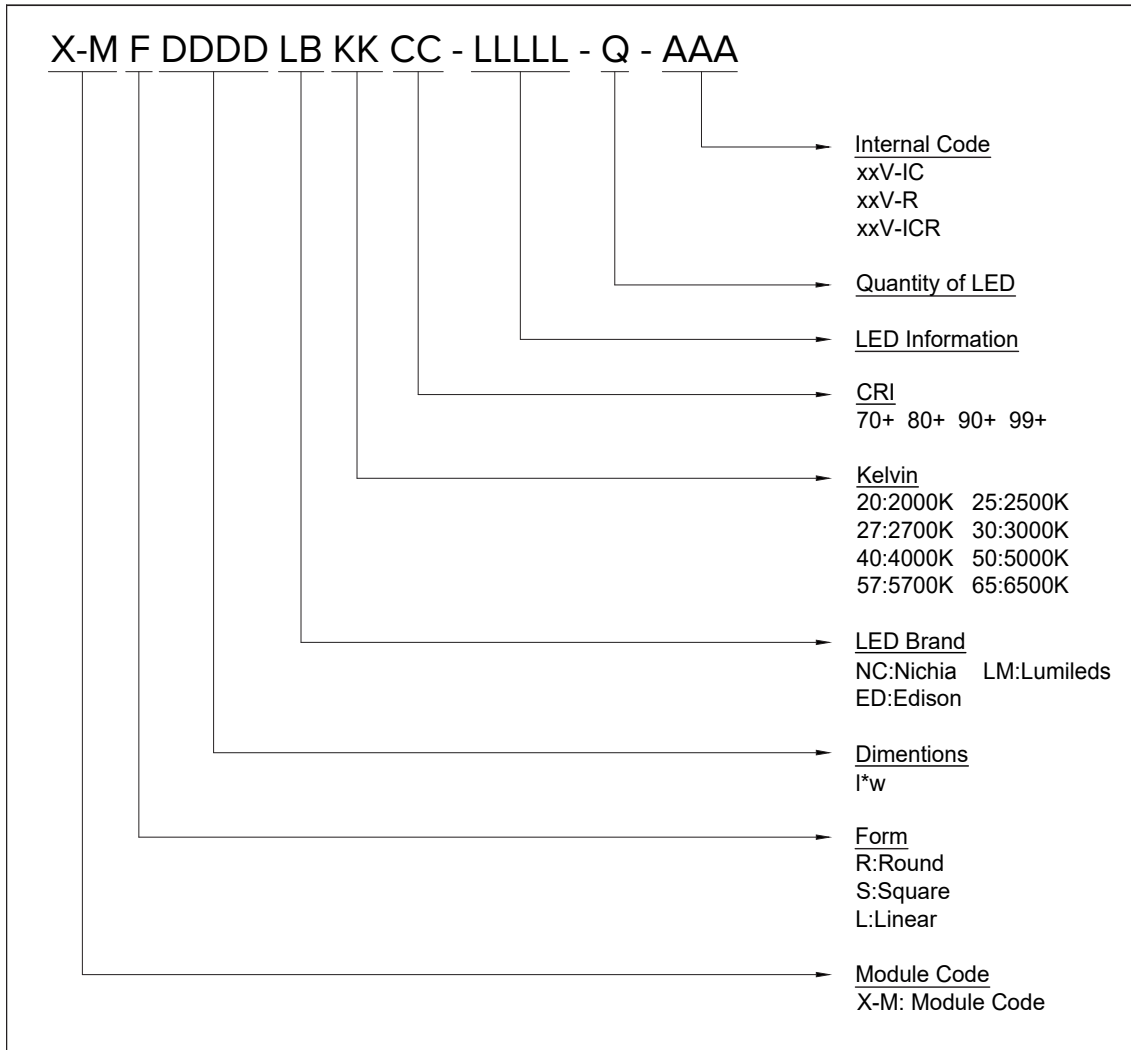
TLS16NI-W60L100-60-IP

TLS16NI-W60L100-STL-V-IP

TECHNICAL DATA

Beam Angle	120°
Ambient temperature range	-25° ~ +55°C
Tc max	85°C
Max. DC forward current	700mA
Typical voltage of LED Module at max current	25V
Insulation test voltage	2kV
ESD classification	Class 1
Risk group (EN 62471:2008)	1
Type of protection	IP00

ORDERING INFORMATION



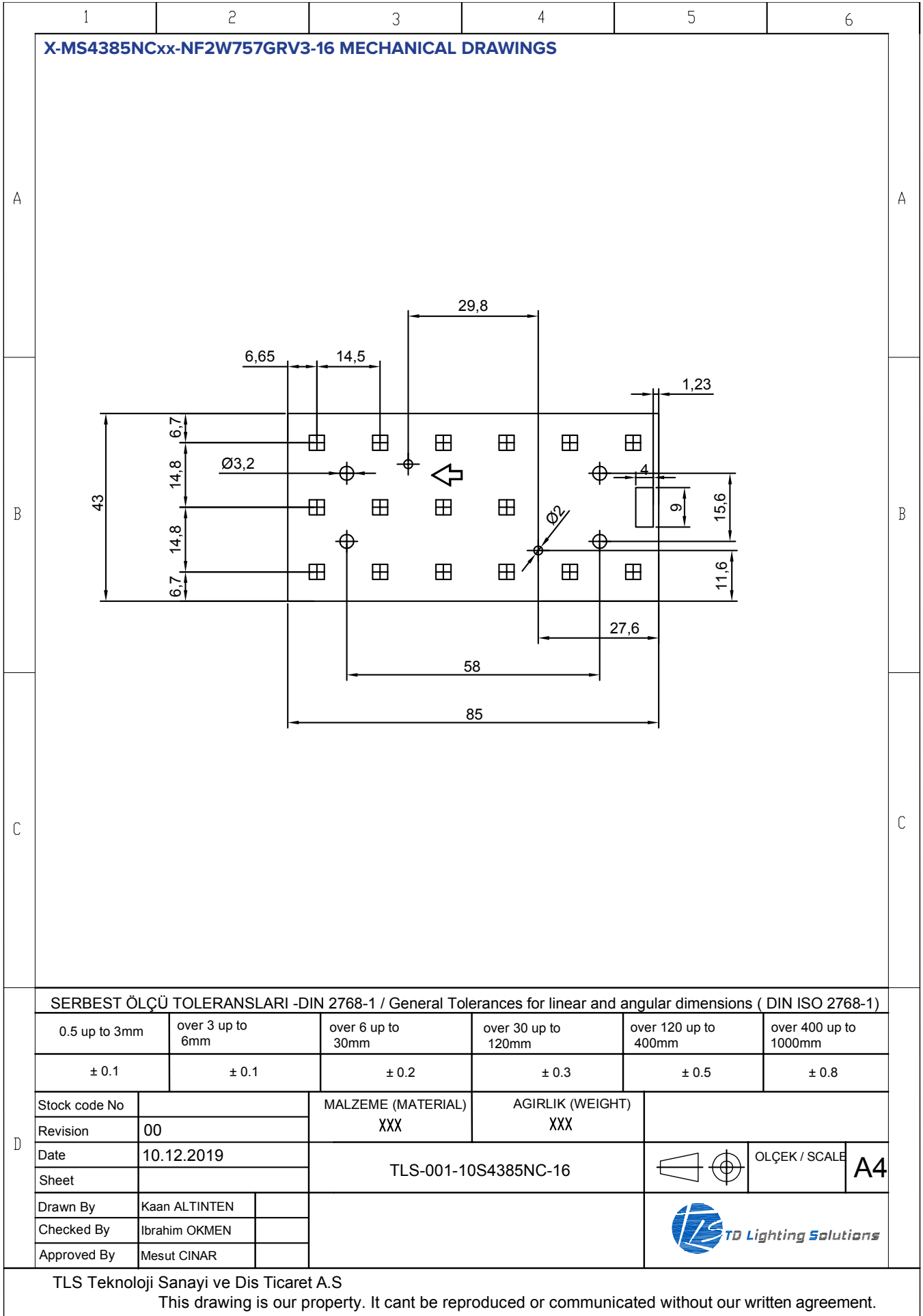
DRIVING CURRENT VS LUMEN OUTPUT SPECIFICATION

Common Characteristic [@Tj : 85°C] ;			
Module Code	X-MS4385NCxx-NF2W757GRV3-16		
PCB Material	ALU	Electrical Connection	
Operating Temperature (°C)	-40 ~ +85	Parallel	4
Storage Temperature (°C)	-40 ~ +55	Series	4
Thermal Conductivity (W/m-K)	1>	LED Quantity	16
LED			
NF2W757GR-V3_R8000			
Correlated Color Temperature (CCT)	4000K		
Color Rendering Index (CRI)	80+		
Module Operating Voltage (V)	22,80	23,60	24,80
Module Operating Current (mA)	350	500	700
Branch Operating Current (mA)	88	125	175
Module Power (W)	7,98	11,80	17,36
Module Light Output (lm)	1.213	1.652	2.396
Module Efficiency (lm/W)	152	140	138
LED			
3030 2D-SQ			
Correlated Color Temperature (CCT)	4000K		
Color Rendering Index (CRI)	80+		
Module Operating Voltage (V)	23,88	24,40	25,20
Module Operating Current (mA)	350	500	700
Branch Operating Current (mA)	88	125	175
Module Power (W)	8,36	12,20	17,64
Module Light Output (lm)	1.421	1.928	2.611
Module Efficiency (lm/W)	170	158	148

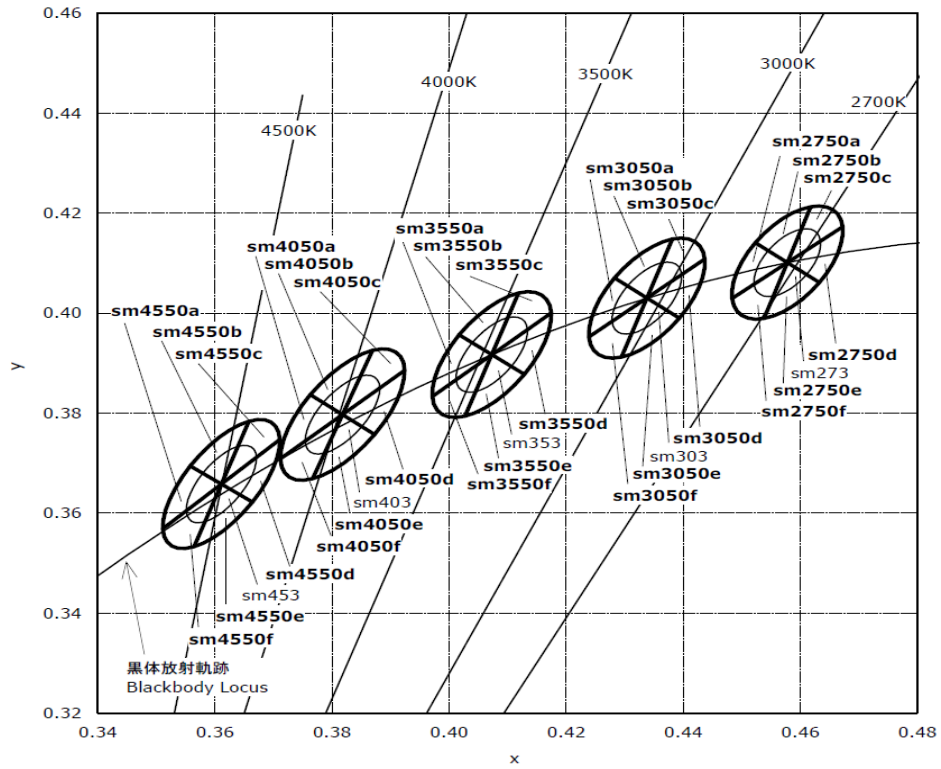
The table below shows how to Module Light Output changes depending on CCT (°K)

LED	Lumen Output Multiplier				
	2700°K (CRI 80)	3000°K (CRI 80)	4000°K (CRI 80)	5000°K (CRI 80)	6500°K (CRI 80)
NF2W757GR-V3_R8000	0,875	0,916	1	1	1
3030 2D-SQ	0,9	1	1,08	1,08	1,08

Relative luminous intensity versus CCT (°K)



CCT AND BINNING INFORMATION



LIFE TIME

MODEL NUMBER: NF2W757GR-V3

Test Summary:

Data Set	Case Temperature [°C]	Ambient Temperature [°C]	Drive Current [mA]	Lumen maintenance at 10K hours [%]	Chromaticity Shift ($\Delta u'v'$) at 10K hours	TM-21 Projection $L_{70}(10K)$ [hours]	TM-21 Projection $L_{80}(10K)$ [hours]	TM-21 Projection $L_{90}(10K)$ [hours]
1	55	> 50	100	98.1	0.0014	> 60600	> 60600	> 60600
2	55	> 50	150	98.3	0.0017	> 60400	> 60400	> 60400
3	55	> 50	200	98.2	0.0020	> 60500	> 60500	48300
4	85	> 80	100	96.4	0.0014	> 60600	> 60600	52500
5	85	> 80	150	96.3	0.0020	> 60400	> 60400	38800
6	85	> 80	200	93.9	0.0035	55900	35300	17100
7	105	> 100	100	92.3	0.0019	> 60600	43700	15500
8	105	> 100	150	93.4	0.0027	> 60400	57800	21000
9	105	> 100	200	90.7	0.0034	42800	26200	11600

LEGAL NOTICE

Product information provided by TLS Teknoloji Sistemleri San ve Dış Tic AŞ ("TLS") in this document is believed to be correct and accurate. TLS reserves the right to change/correct the specifications and other data or information relating to products without notice but TLS accepts no liability for errors that may appear in this document, howsoever occurring, or liability arising from the use or application of any information or data provided herein. Neither the supply of such information, nor the purchase or use of products conveys any licence or permission under patent, copyright, trademark or other intellectual property right of TLS or third parties.

Products sold by TLS are subject to its standard Terms and Conditions of Sale that are available on request. No warranty is given that products do not infringe the intellectual property rights of third parties, and furthermore, the use of products in certain ways or in combination with TLS, or non-TLS furnished equipments/components may infringe intellectual property rights of TLS.

The purpose of this document is to provide information only and it may not be used, applied or reproduced (in whole or in part) for any purpose nor be taken as a representation relating to the products in question. No warranty or guarantee express or implied is made concerning the capability, performance or suitability of any product, and information concerning possible applications or methods of use is provided for guidance only and not as a recommendation. The user is solely responsible for determining the performance and suitability of the product in any application and checking that any specification or data it seeks to rely on has not been superseded.

Products are intended for normal commercial applications. For applications requiring unusual environmental requirements, extended temperature range, or high reliability capability (e.g. military, or medical applications), special processing/testing/conditions of sale may be available on application to TLS.

CONTACT

TLS Teknoloji Sistemleri San ve Dış Tic AŞ

Akçaburgaz Mahallesi 3080. Sokak No:5 Esenyurt / İstanbul / TURKEY

info@tsteknoloji.com
+90 444 27 33